

CALVIN KLEIN

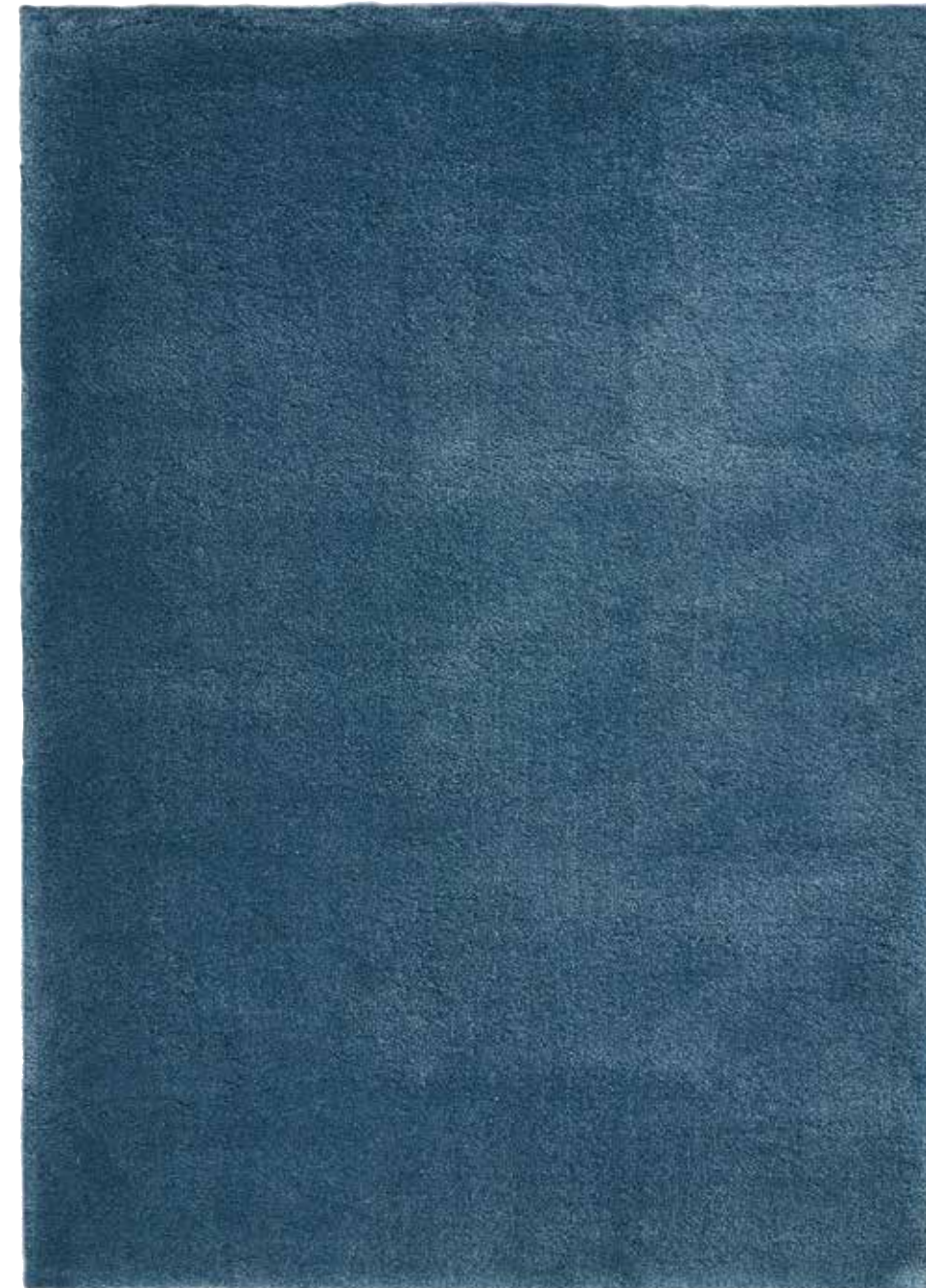
RUG COLLECTION

COLLECTION	PAGE
BROOKLYN	5
CHICAGO SHAG	6
LA	8
SAN DIEGO	9
SEATTLE	15
NASHVILLE	19
SAN ANTONIO	27
SACRAMENTO	31
TUCSON	32
LAS VEGAS	33
ORLANDO	34
NEWARK	36

CALVIN KLEIN RUGS PRESENT A FRESH, CLEAN, AND UNDERSTATED STYLE THAT IS AUTHENTICALLY CALVIN KLEIN. SIMPLE TRANSITIONAL PATTERNS COMBINE TONAL CONTRAST AND UNEXPECTED COLOR COMBINATIONS WITH SURFACE TEXTURE, USING WOOL, BAMBOO, AND OTHER NATURAL FIBERS TO PROVIDE WONDERFULLY MODERN RUGS THAT MAKE A STATEMENT - STRONG OR SUBTLE. THE TIMELESS DESIGNS, FINE RAW MATERIALS, AND CRAFTSMANSHIP REFLECT THE LUXURIOUS AND HIGH STANDARDS OF CALVIN KLEIN.

BROOKLYN - CK700

CALVIN KLEIN OFFERS A MODERN REIMAGINING OF CLASSIC SHAG STYLES WITH THE BROOKLYN RUG COLLECTION. EACH LUXURIOUS RUG FEATURES A LUSH PILE, WITH AN INVITING, TACTILE QUALITY. STATEMENT-MAKING AND VERSATILE, THESE BEAUTIFULLY CRAFTED PLUSH RUGS ARE AN ESSENTIAL ADDITION TO ANY HOME.



GREEN POINT BLUE – CK700 BLUE



GREEN POINT BEIGE – CK700 BEIGE



GREEN POINT BURGUNDY – CK700 BURG



GREEN POINT CHARCOAL – CK700 CHARC



GREEN POINT IVORY – CK700 IVORY



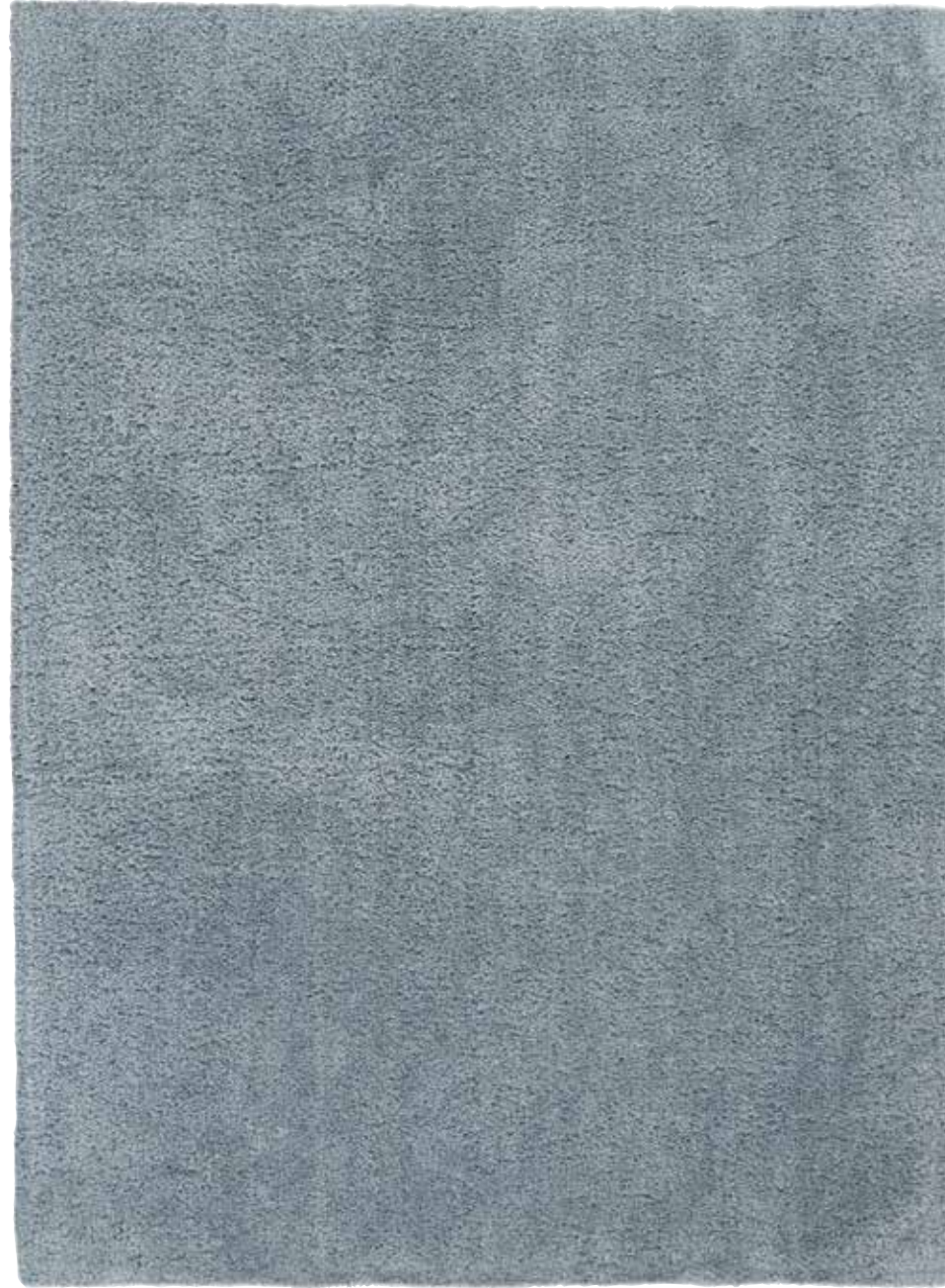
GREEN POINT SILVER – CK700 SILVR

POLYESTER SHAG

4 FT X 6 FT (1.22M X 1.83M)
5 FT 3 IN. X 7 FT 5 IN. (1.60M X 2.26M)
7 FT 10 IN. X 9 FT 10 IN. (2.39M X 3.0M)
9 FT X 12 FT (2.74M X 3.66M)
1 FT X 6 FT BLANKET (0.31M X 1.86M)

CHICAGO SHAG - CK720

CALVIN KLEIN'S CLASSIC CHIC BLENDS BEAUTIFULLY IN THE LUXURIOUSLY PLUSH CHICAGO SHAG COLLECTION. RICH, SILKY COLOR BLOCKS AND SOLIDS TAKE ON AN EXTRA SHEEN, GIVING THE SOFT FINISH A MODERN VIBE IN THESE TUFTED, CONTEMPORARY SHAG RUGS.



HYDE PARK GREY – CK721 GREY

POLYESTER SHAG

4 FT X 6 FT (1.22M X 1.83M)
5 FT X 7 FT (1.52M X 2.13M)
7 FT 6IN. X 9 FT 6 IN.(2.29M X 2.90M)

CHICAGO SHAG



WICKER PARK BLUE – CK722 BLUE

POLYESTER SHAG

4 FT X 6 FT (1.22M X 1.83M)
5 FT X 7 FT (1.52M X 2.13M)
7 FT 6IN. X 9 FT 6 IN.(2.29M X 2.90M)



HYDE PARK NAVY – CK721 NAVY



HYDE PARK WHITE – CK721 WHITE



WICKER PARK WHITE GREY – CK722 WHTGY



WICKER PARK WHITE NAVY – CK722 WHTNV

LA - CK710

DEEP, RICH COLORS DISTINGUISH THESE SUPREMELY SOFT SHAG RUGS FROM CALVIN KLEIN. THE CALVIN KLEIN LA COLLECTION COMBINES CONTEMPORARY SINGLE COLOR SHADES WITH A THICK, LUXURIOUS PILE. THE UNDERSTATED SOPHISTICATION OF CALVIN KLEIN IS REFLECTED IN THESE BEAUTIFUL HAND-LOOMED RUGS THAT WILL ADD A TOUCH OF PURE COMFORT TO ANY ROOM IN YOUR HOME.



ECHO PARK BURGUNDY – CK710 BURGU

POLYESTER SHAG

- 4 FT X 6 FT (1.22M X 1.83M)
- 5 FT 3 IN. X 7 FT 5 IN. (1.60M X 2.26M)
- 8 FT X 10 FT (2.44M X 3.05M)
- 9 FT X 12 FT (2.74M X 3.66M)
- 1 FT X 4 FT BLANKET (0.31M X 1.22M)



ECHO PARK COBALT – CK710 COBAL



ECHO PARK IVORY – CK710 IVORY



ECHO PARK YELLOW – CK710 YELLO

SAN DIEGO - CK730

FLATWEAVE, REVERSIBLE

THE SAN DIEGO COLLECTION OF FLAT WEAVE RUGS FROM CALVIN KLEIN ADDS DIMENSION TO CONTEMPORARY COLORWAYS. BOLD COLOR BANDS OF BLACK, NAVY, BEIGE, AND LIGHT BLUE ARE ACCENTED WITH BEIGE AND BLACK WARP THREADS FOR UNIQUE DEPTH AND SUBTLE SOPHISTICATION, WITH FINE TEXTURING THAT EXEMPLIFIES THE UNPARALLELED QUALITY AND MODERN STYLE OF CALVIN KLEIN.



LA JOLLA COBALT/BLACK – CK730 COBLK

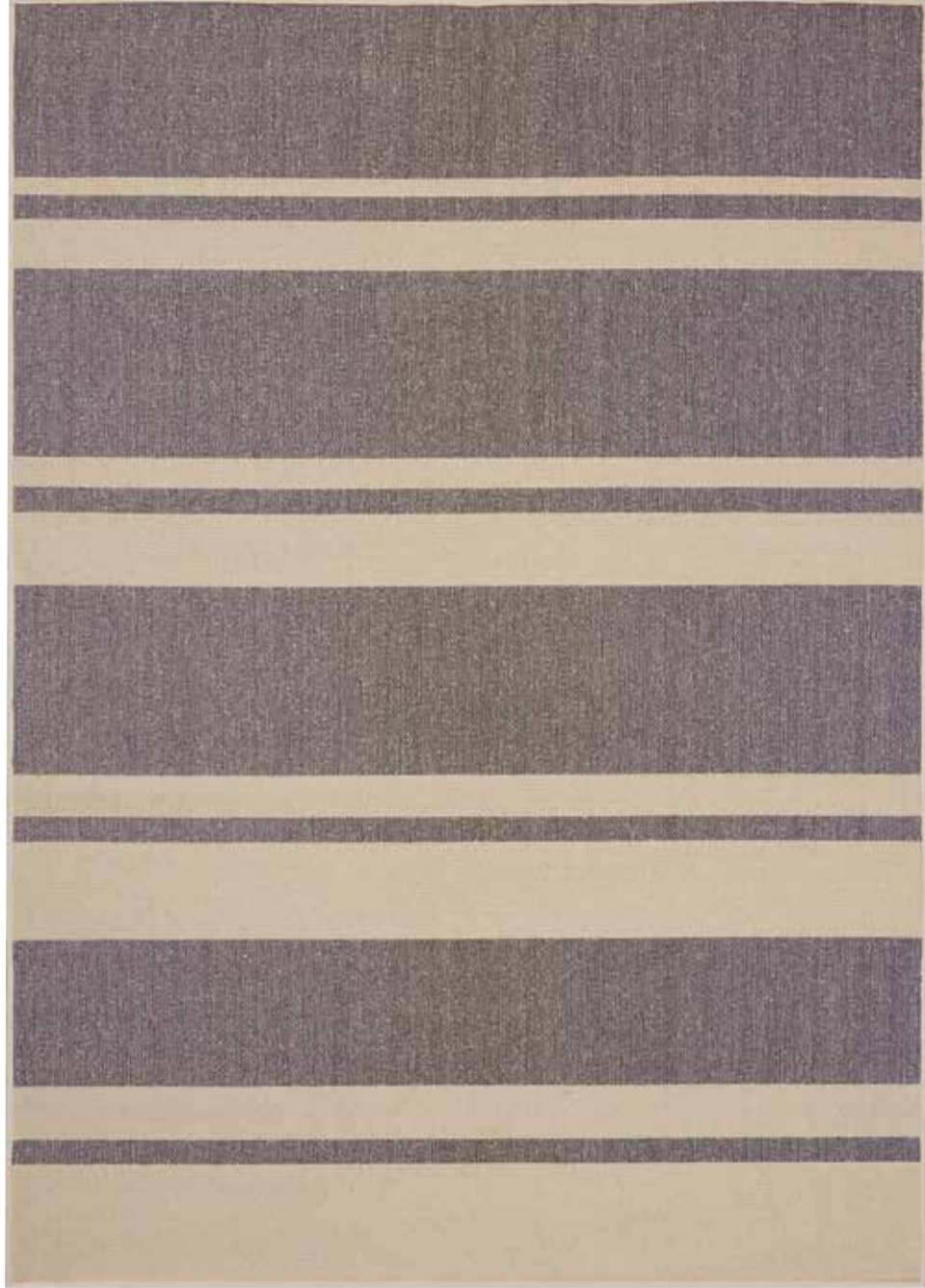
POLYESTER, COTTON, RAYON

- 4 FT X 6 FT (1.22M X 1.83M)
- 5 FT X 7 FT (1.52M X 2.13M)
- 8 FT X 10 FT (2.44M X 3.05M)



LA JOLLA COBALT/BLACK (DETAIL)

SAN DIEGO

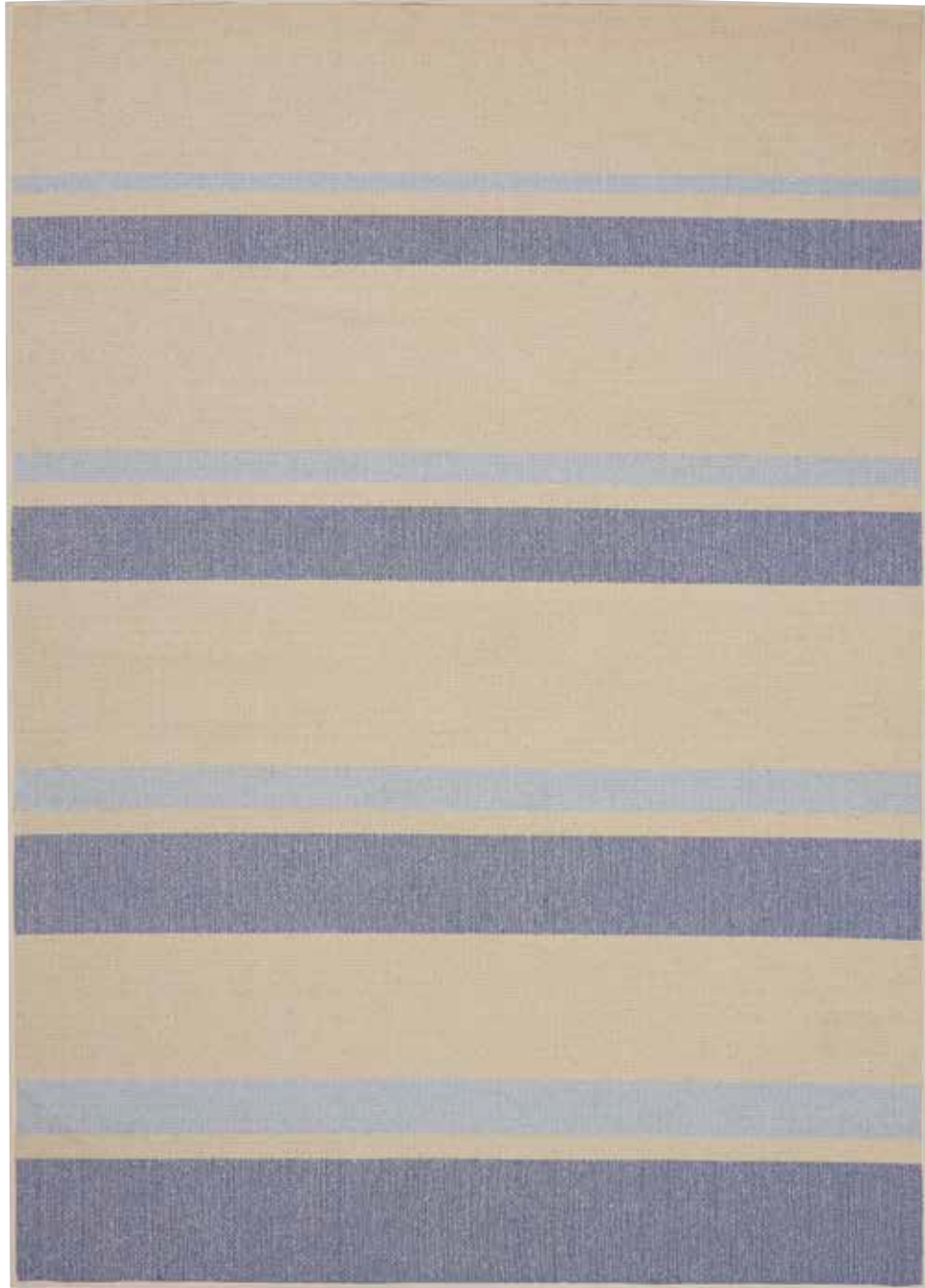


LA JOLLA BEIGE BLACK - CK730 BGEBK



LA JOLLA BEIGE BLACK (DETAIL)

SAN DIEGO

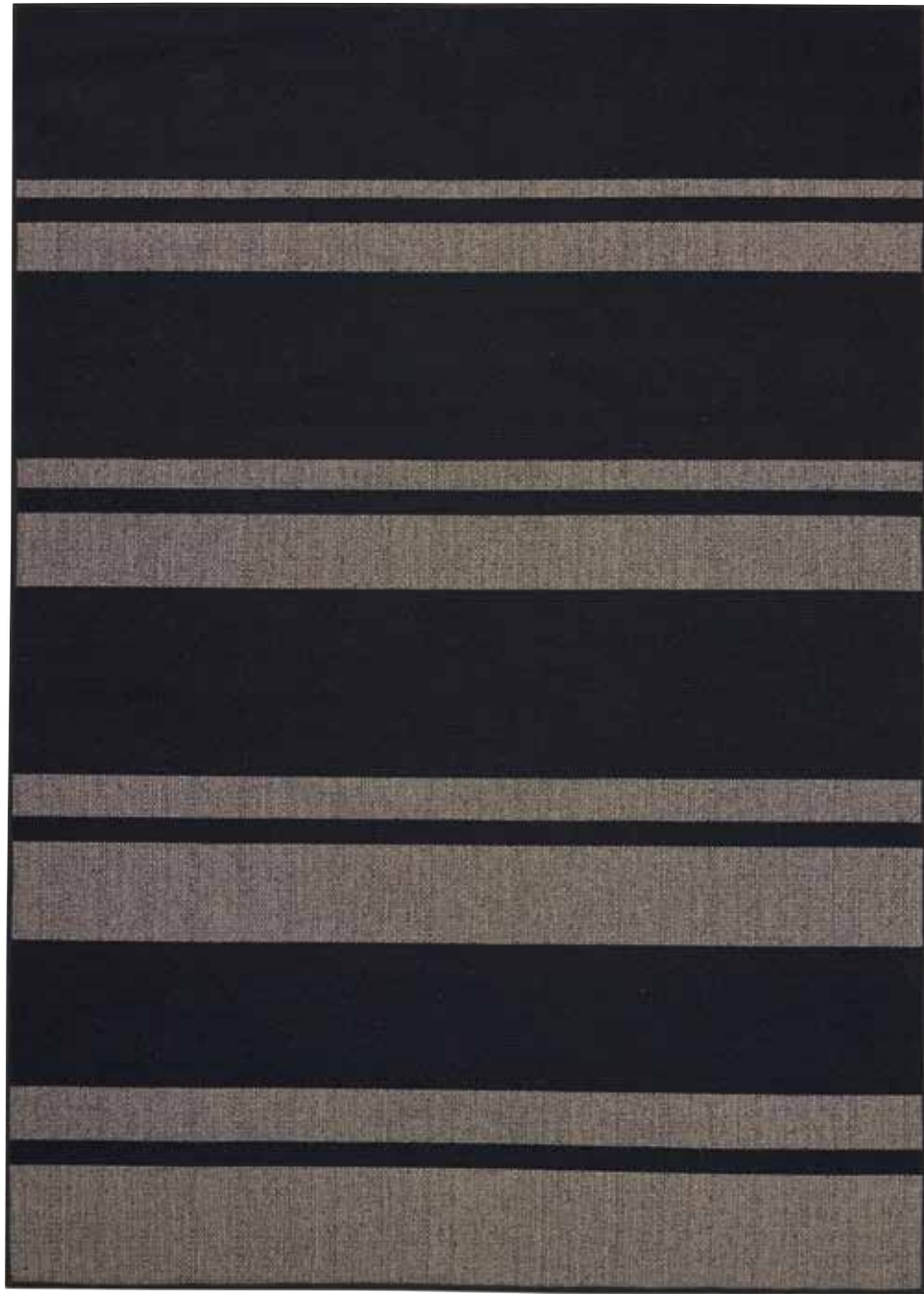


LA JOLLA BEIGE LIGHT BLUE - CK730 BGELTB



LA JOLLA BEIGE LIGHT BLUE (DETAIL)

SAN DIEGO

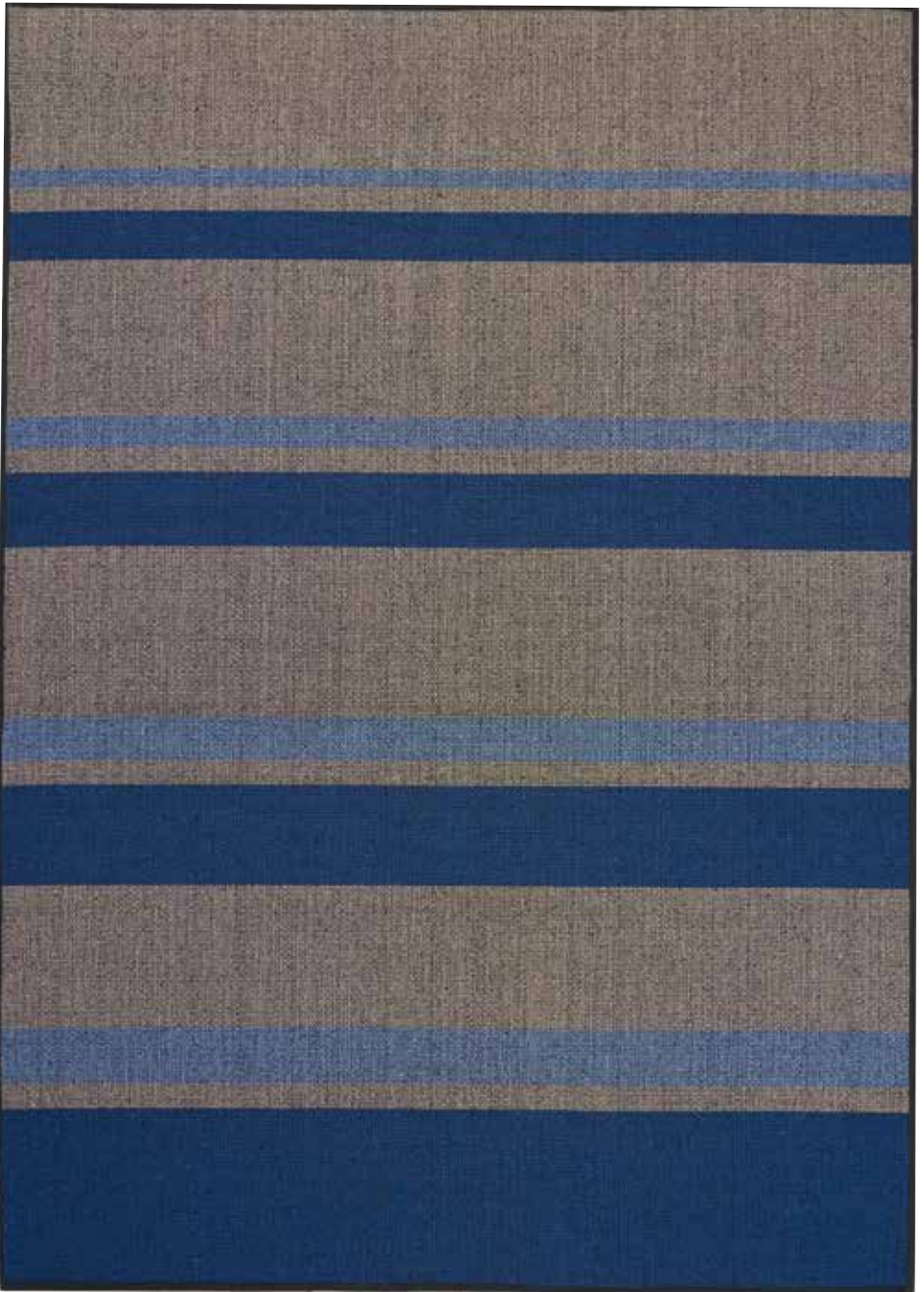


LA JOLLA BLACK/BEIGE - CK730 BLKBG



LA JOLLA BLACK/BEIGE (DETAIL)

SAN DIEGO

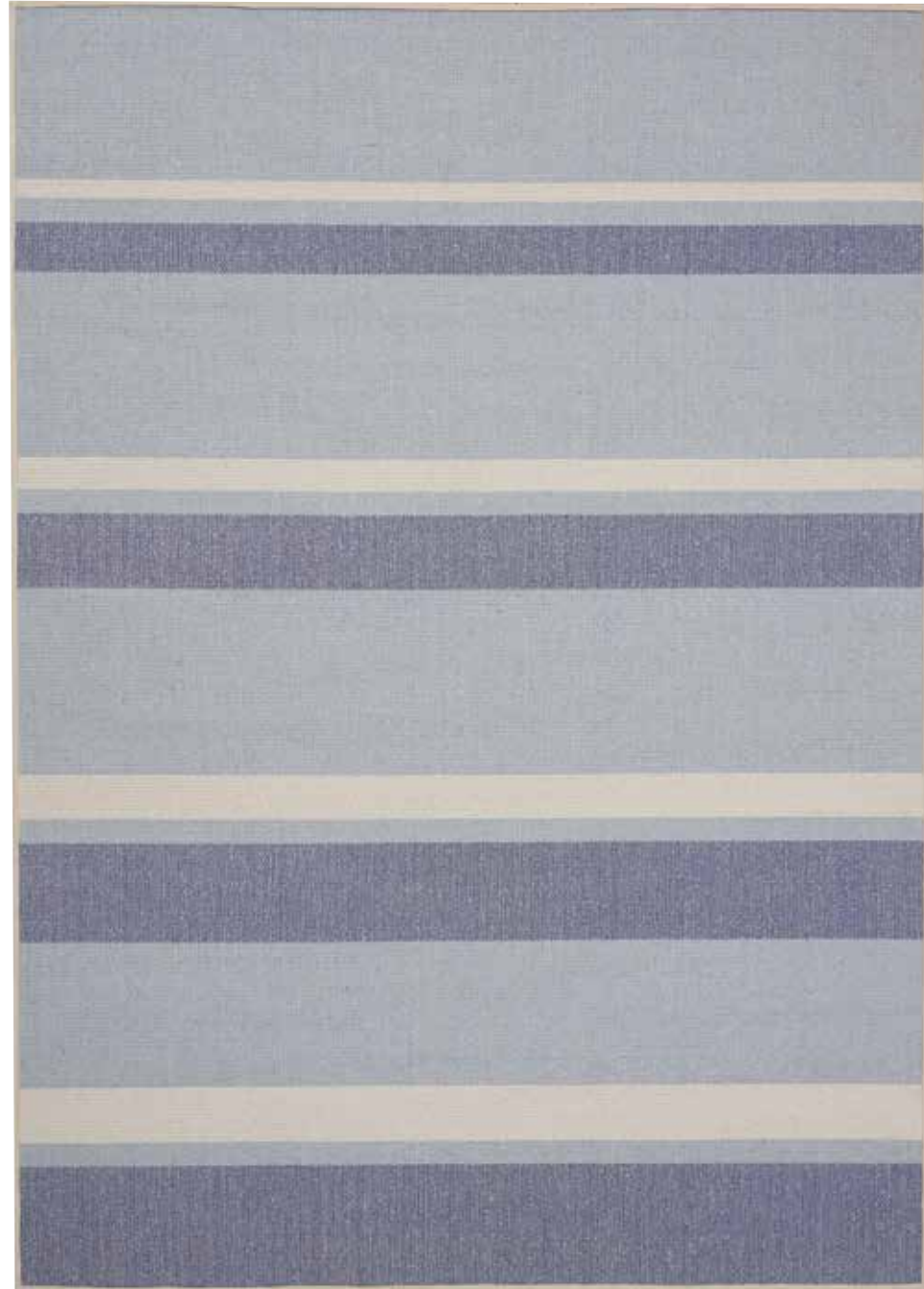


LA JOLLA BEIGE COBALT - CK730 BGECEB



LA JOLLA BEIGE COBALT (DETAIL)

SAN DIEGO



LA JOLLA LIGHT BLUE - CK730 LTBLU

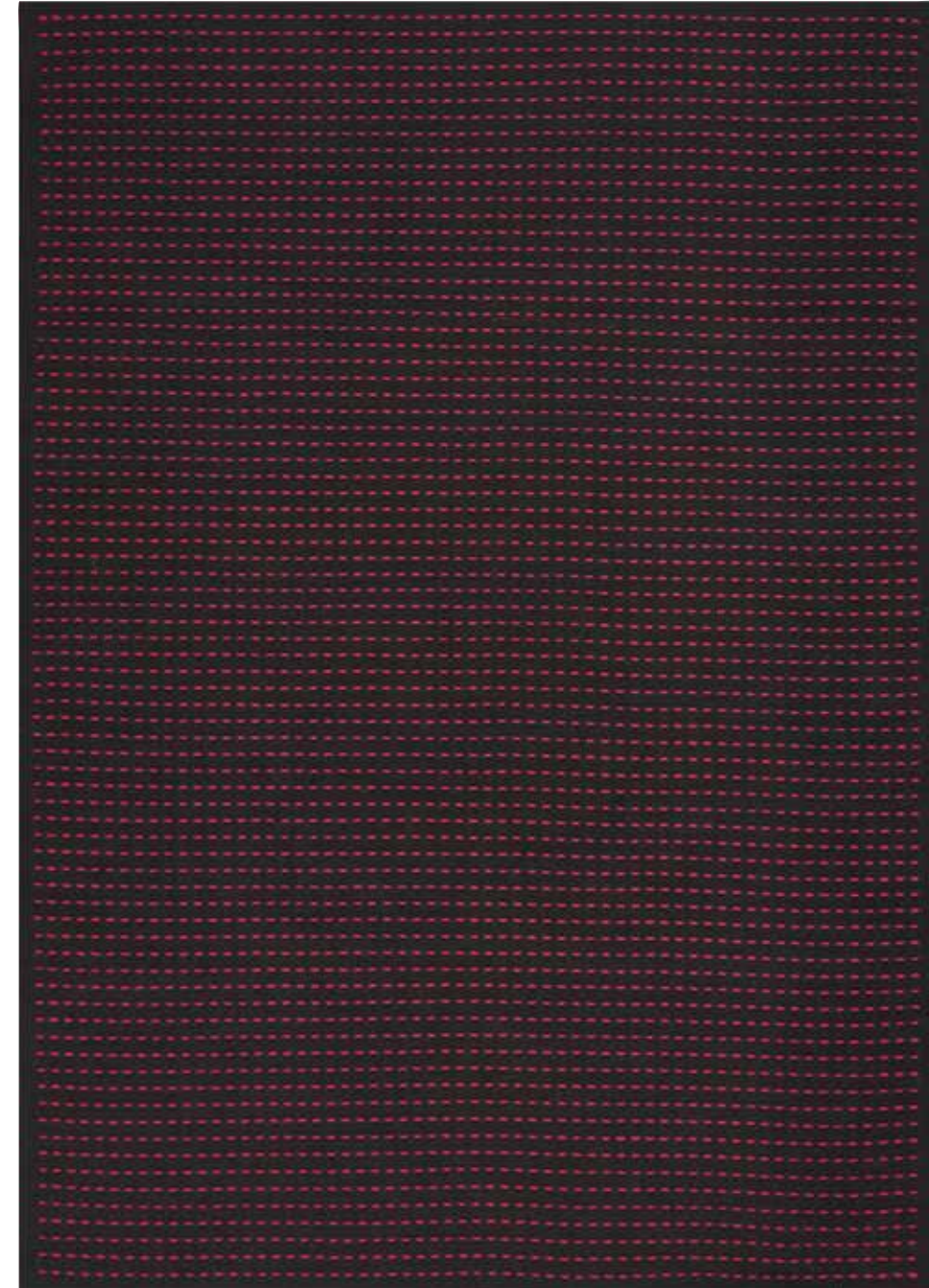


LA JOLLA LIGHT BLUE (DETAIL)

SEATTLE - CK740

INDOOR/OUTDOOR, FLATWEAVE

A CLASSIC FLAT WEAVE GETS A CONTEMPORARY UPDATE WITH THESE INDOOR-OUTDOOR RUGS FROM CALVIN KLEIN. THE SEATTLE COLLECTION FEATURES CHARCOAL, BEIGE, AND BLACK FIELDS ACCENTED WITH CONTRASTING INTERWOVEN DETAILS THAT BRING A UNIQUE TEXTURE AND CHARACTER TO EACH HANDCRAFTED RUG. AN IDEAL, EASY-CARE STATEMENT FOR ANY HOME, PORCH, OR PATIO.



PIKE PLACE BLACK/MAGENTA - CK740 BKMAG

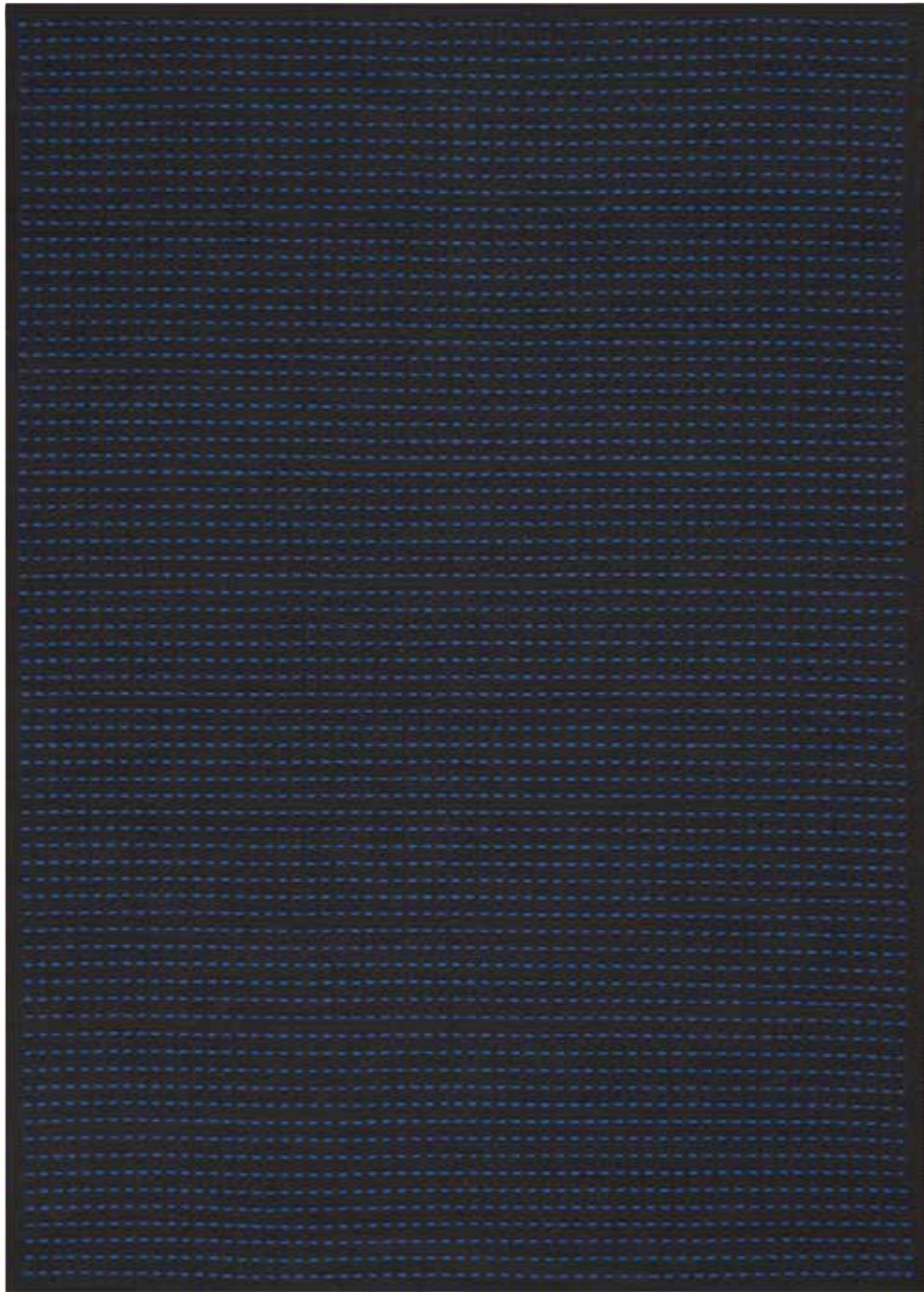


PIKE PLACE BLACK/MAGENTA (DETAIL)

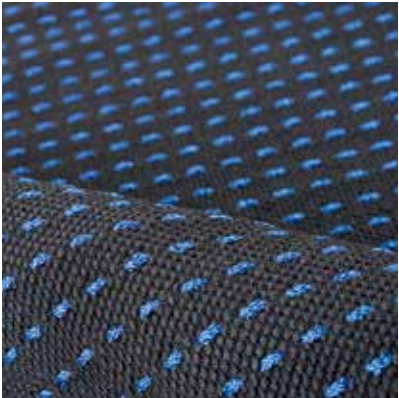
POLYPROPYLENE

4 FT X 6 FT (1.22M X 1.83M)
5 FT X 7 FT (1.52M X 2.13M)
8 FT X 10 FT (2.44M X 3.05M)

SEATTLE

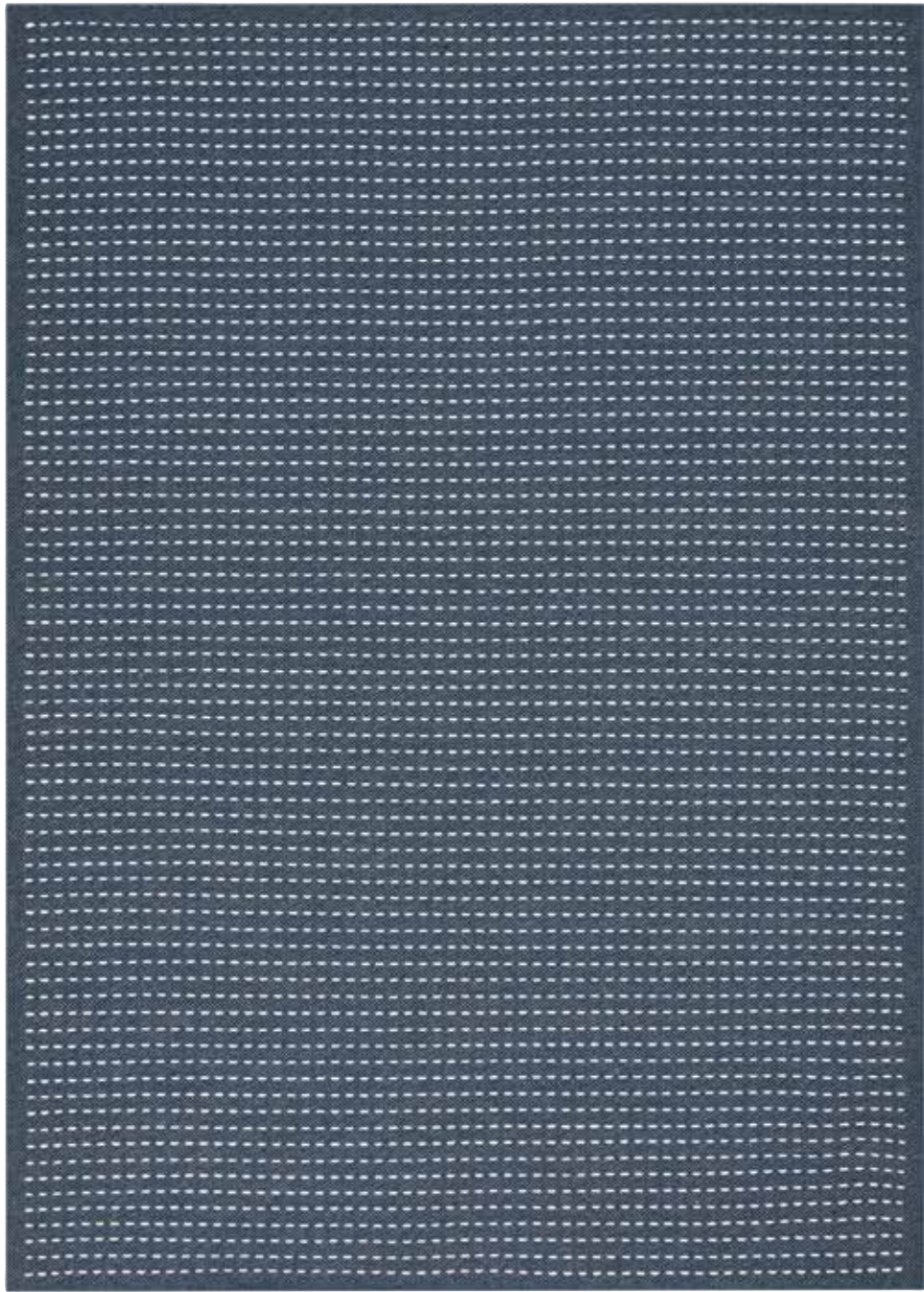


PIKE PLACE BLACK/COBALT – CK740 BLKCB



PIKE PLACE BLACK/COBALT (DETAIL)

SEATTLE

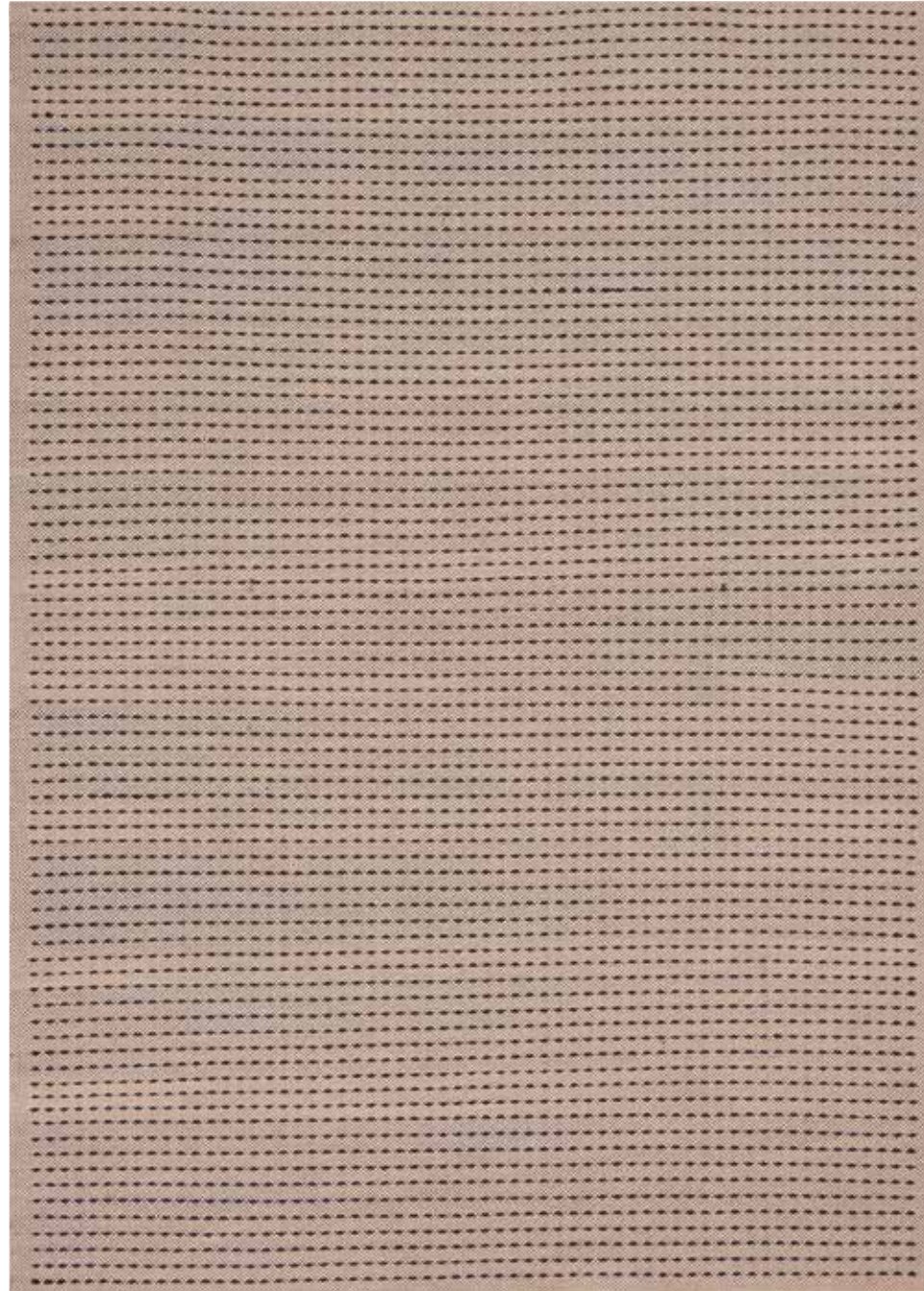


PIKE PLACE CHARCOAL/WHITE – CK740 CHAWT



PIKE PLACE CHARCOAL/WHITE (DETAIL)

SEATTLE



PIKE PLACE CREAM/BLACK – CK740 CRMBK



PIKE PLACE CREAM/BLACK (DETAIL)

NASHVILLE - CK750

FLATWEAVE, REVERSIBLE

CLEAN LINES NOD TO THE MINIMALIST TRADITION OF CALVIN KLEIN, WHILE BOLD STRIPES AND STRONG COLORS IMPART HIGH-IMPACT APPEAL. FLAT-WOVEN BY HAND, THESE REVERSIBLE RUGS OFFER VERSATILITY AND DURABILITY FOR YEARS TO COME.



12 SOUTH HUNTER GREEN/MAGENTA/BLACK – CK750 HGMBK



12 SOUTH HUNTER GREEN/MAGENTA/BLACK (DETAIL)

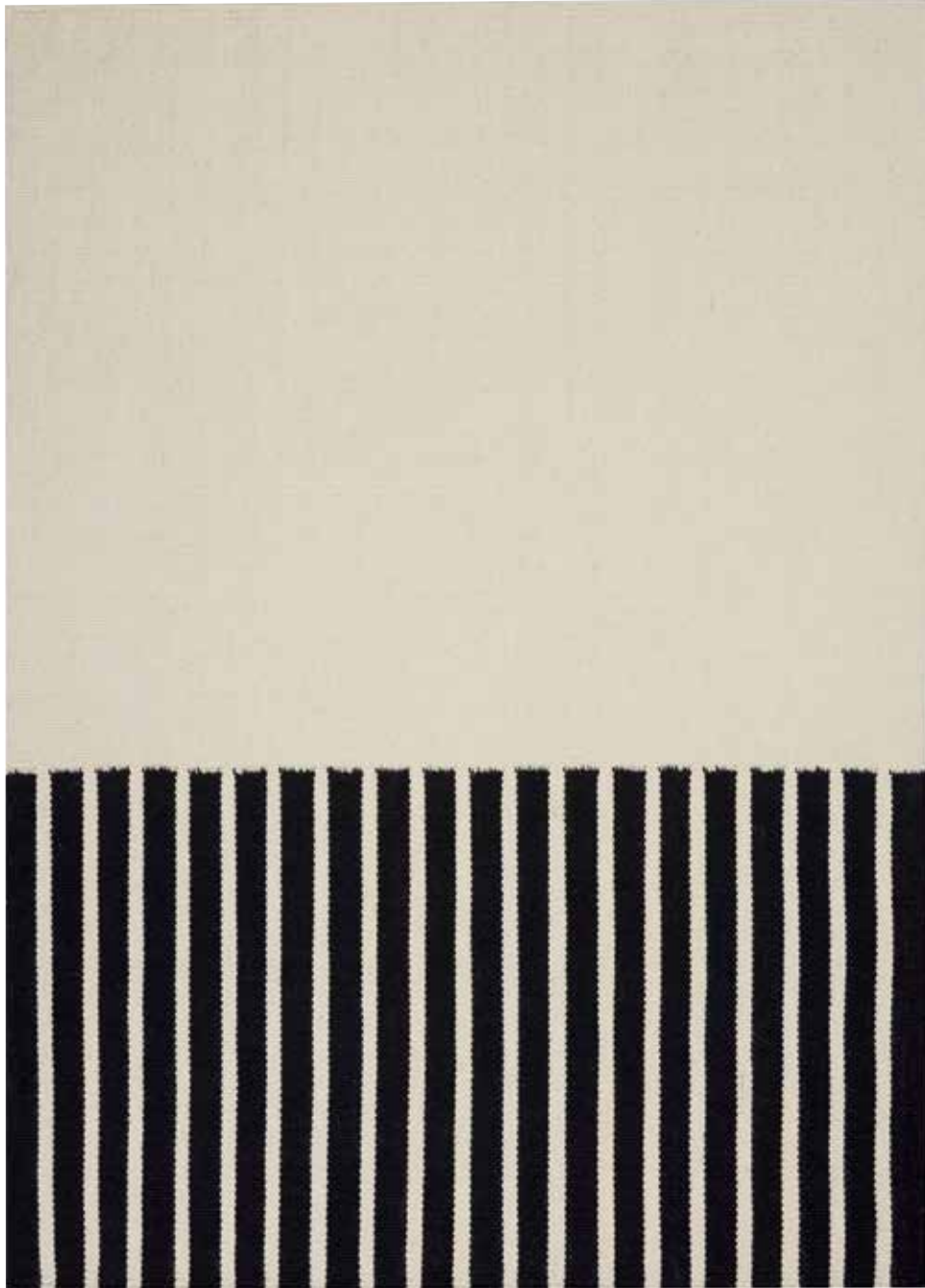
COTTON, WOOL, POLYESTER

4 FT X 6 FT (1.22M X 1.83M)

5 FT X 7 FT (1.52M X 2.13M)

8 FT X 10 FT (2.44M X 3.05M)

NASHVILLE



12 SOUTH IVORY/BLACK - CK750 IVBLK



12 SOUTH IVORY/BLACK (DETAIL)

NASHVILLE



MUSIC ROW BLUE - CK751 BLUE



MUSIC ROW BLUE (DETAIL)

NASHVILLE

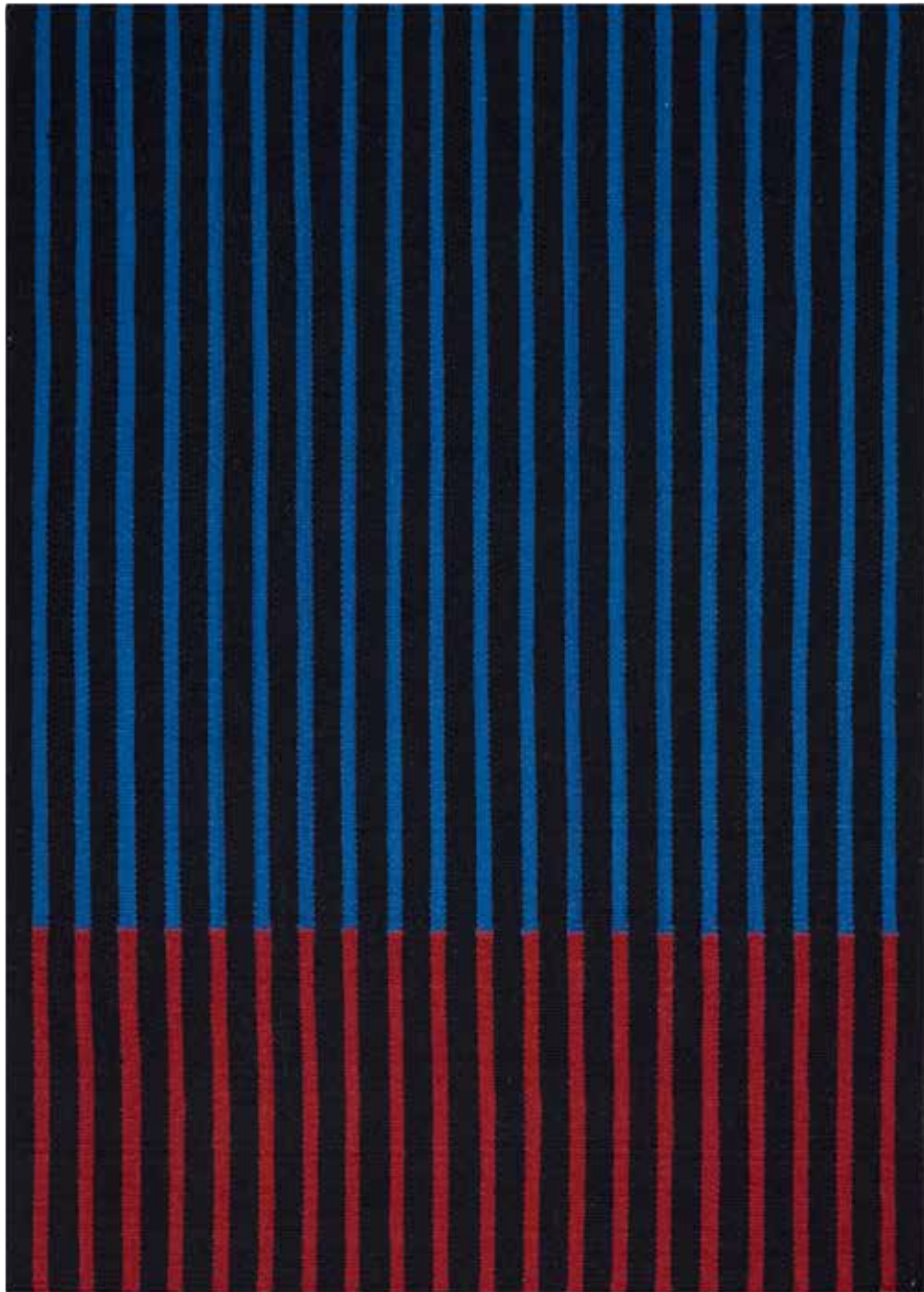


MUSIC ROW MAGENTA – CK751 MAGEN



MUSIC ROW MAGENTA (DETAIL)

NASHVILLE

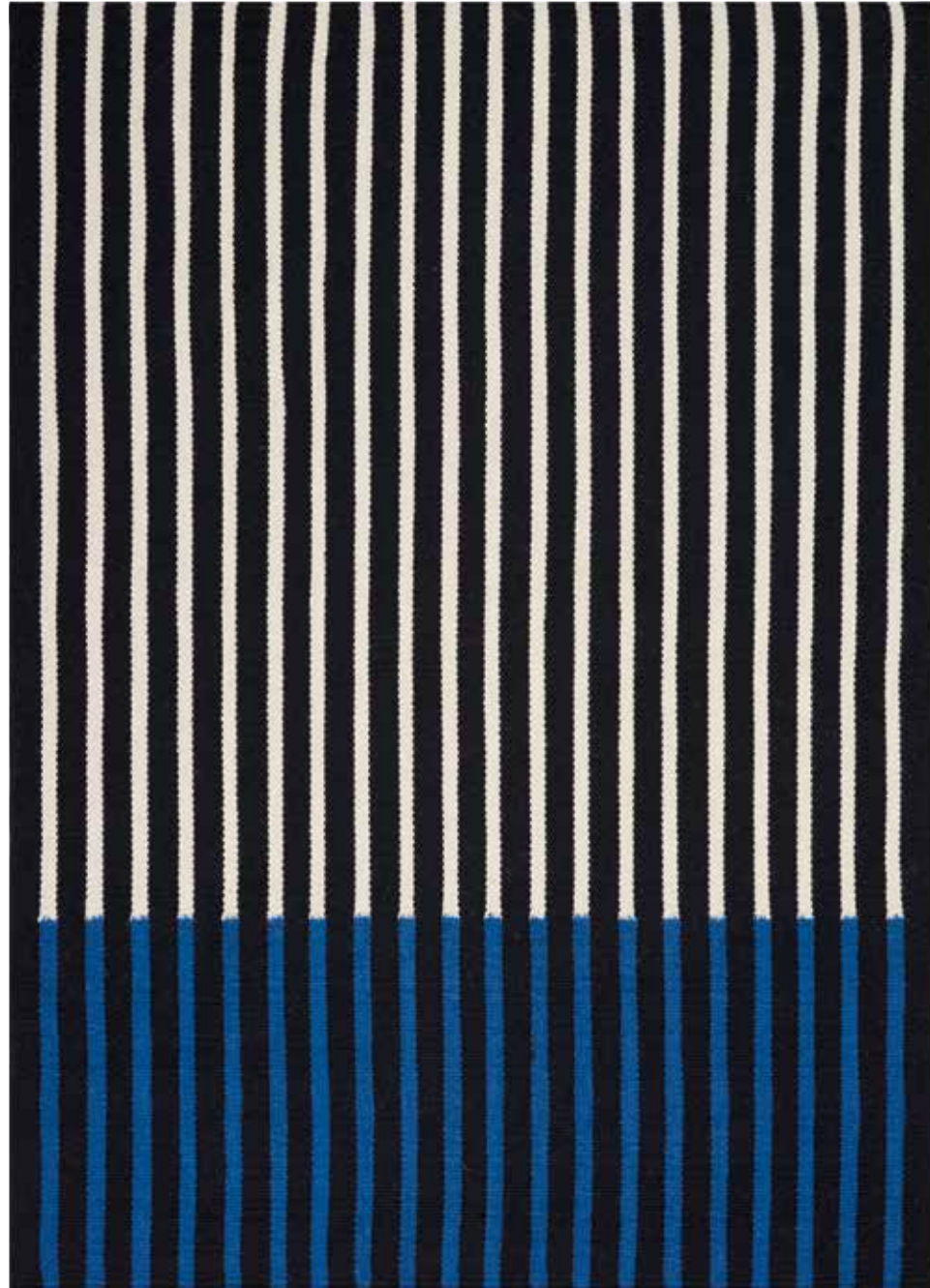


FIVE POINTS BLACK/COBALT/MAGENTA – CK752 BKCBM

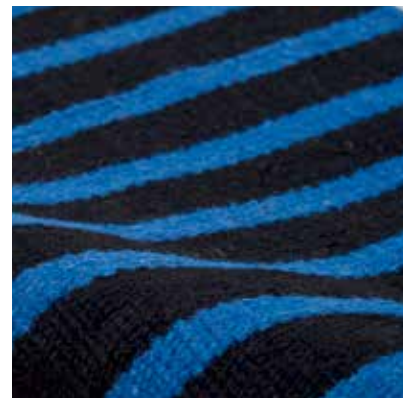


FIVE POINTS BLACK/COBALT/MAGENTA (DETAIL)

NASHVILLE

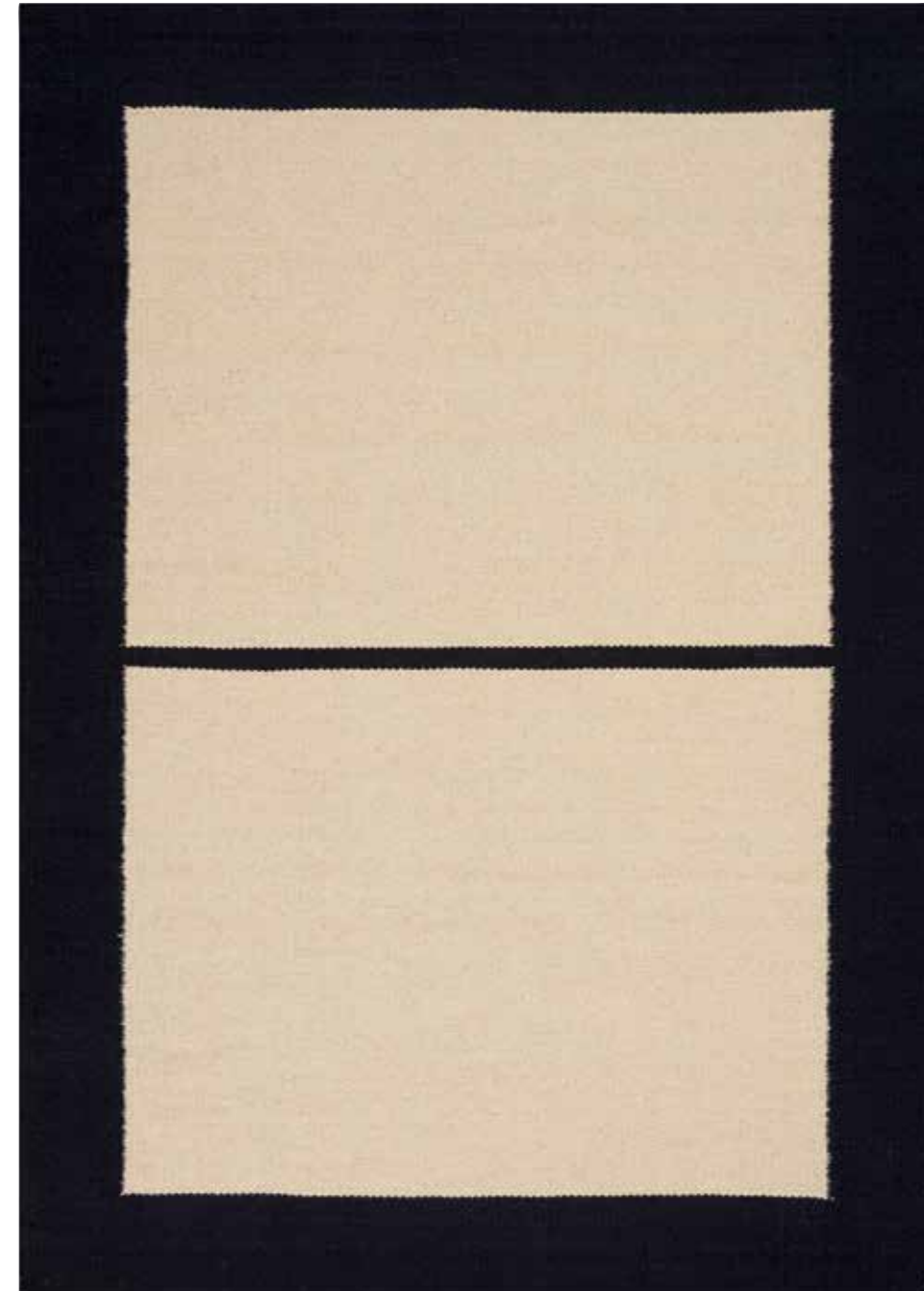


FIVE POINTS IVORY/BLACK/COBALT – CK752 IVBKC



FIVE POINTS IVORY/BLACK/COBALT (DETAIL)

NASHVILLE

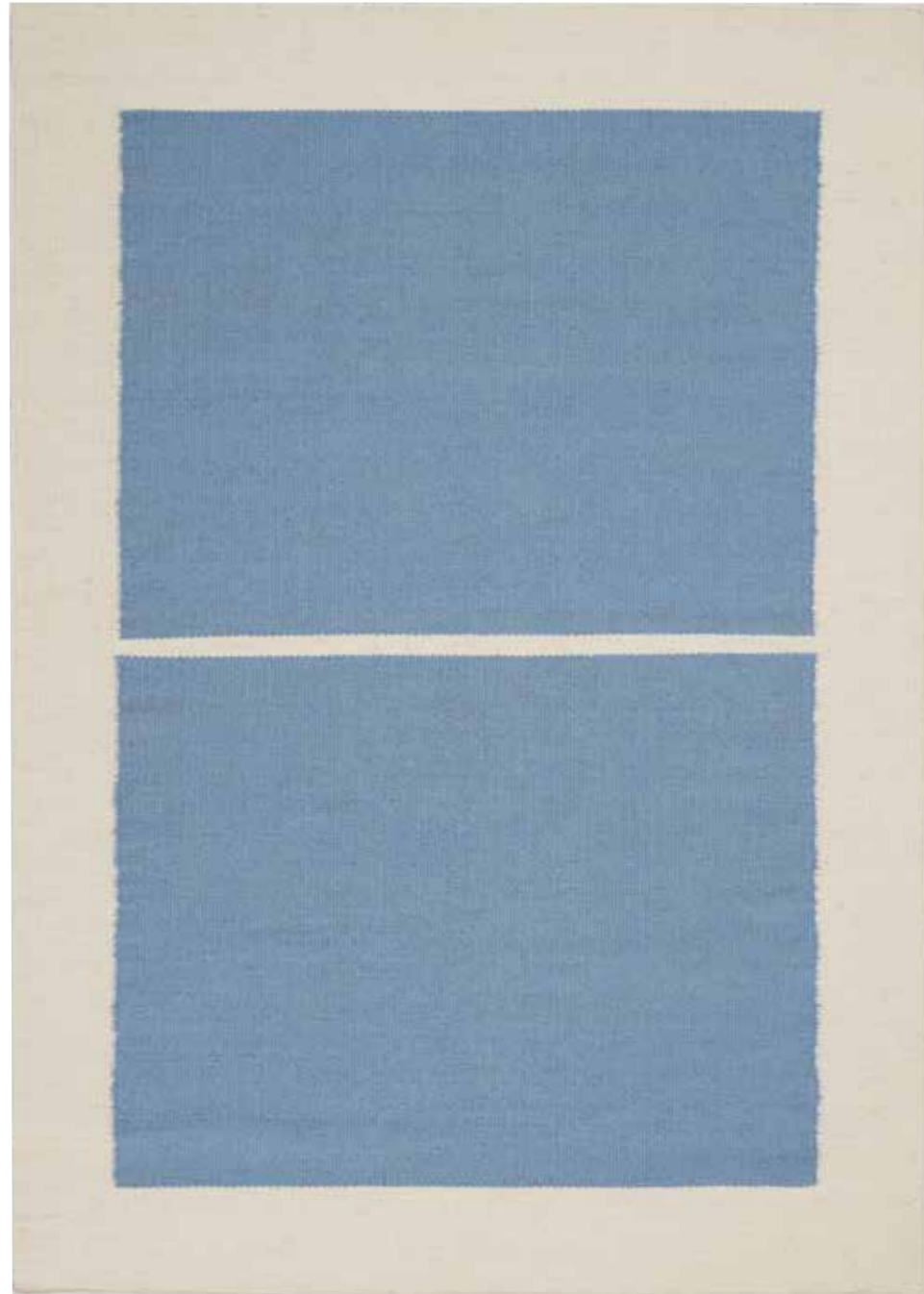


SOBRO IVORY/BLACK – CK753 IVBLK



SOBRO IVORY/BLACK (DETAIL)

NASHVILLE



SOBRO LIGHT BLUE/IVORY – CK753 LTBIV



SOBRO LIGHT BLUE/IVORY (DETAIL)

SAN ANTONIO - CK770

THE SAN ANTONIO RUG COLLECTION FROM CALVIN KLEIN ACHIEVES A NEW LEVEL IN LUXURY WITH THESE EXCEPTIONALLY TEXTURED LONG-PILE MOROCCAN RUGS. HAND KNOTTED FROM FINE WOOL, EACH RUG IS A STATEMENT PIECE EXEMPLIFYING A NEW GENERATION OF CALVIN KLEIN, BRINGING ITS ICONIC STYLE TO HOME DÉCOR.



SOUTHTOWN MULTICOLOR – CK771 MULTI



SOUTHTOWN MULTICOLOR (DETAIL)

WOOL BLEND SHAG

- 2 FT 3 IN. X 3 FT (0.69M X 0.91M)
- 5 FT 6 IN. X 8 FT (1.68M X 2.44M)
- 8 FT X 10 FT (2.44M X 3.05M)
- 9 FT X 12 FT (2.74M X 3.66M)

SAN ANTONIO



PALM HEIGHTS IVORY/MULTICOLOR – CK772 IVMTC



PALM HEIGHTS IVORY/MULTI (DETAIL)

SAN ANTONIO



TOBIN HILL IVORY/MULTICOLOR – CK773 IVMTC



TOBIN HILL IVORY/MULTI (DETAIL)

SAN ANTONIO



BRAUN STATION CHARCOAL/IVORY – CK774 CHAIV



BRAUN STATION CHARCOAL/IVORY (DETAIL)

SACRAMENTO - CK790

THE SACRAMENTO RUG COLLECTION FROM CALVIN KLEIN MARRIES SOPHISTICATED TEXTURE WITH MODERN STYLE. LUXURIOUS WOOL-BLEND FIBERS ARE WOVEN TO EMULATE THE LOOK OF A TIBETAN HAND-KNOTTED RUG, FINISHED WITH THICK, RICH PILE FOR AN ULTRA-PLUSH FINISH.



MIDTOWN BLUE – CK790 BLUE

NEW ZEALANDWOOL/VISCOSE

- 5 FT 6 IN. X 8 FT (1.68M X 2.44M)
- 7 FT 9 IN. X 9 FT 9 IN. (2.36M X 2.97M)
- 8 FT 6 IN. X 11 FT 6 IN. (2.59M X 3.51M)
- 9 FT 9 IN. X 13 FT 9 IN. (2.97M X 4.19M)



MIDTOWN IVORY – CK790 IVORY



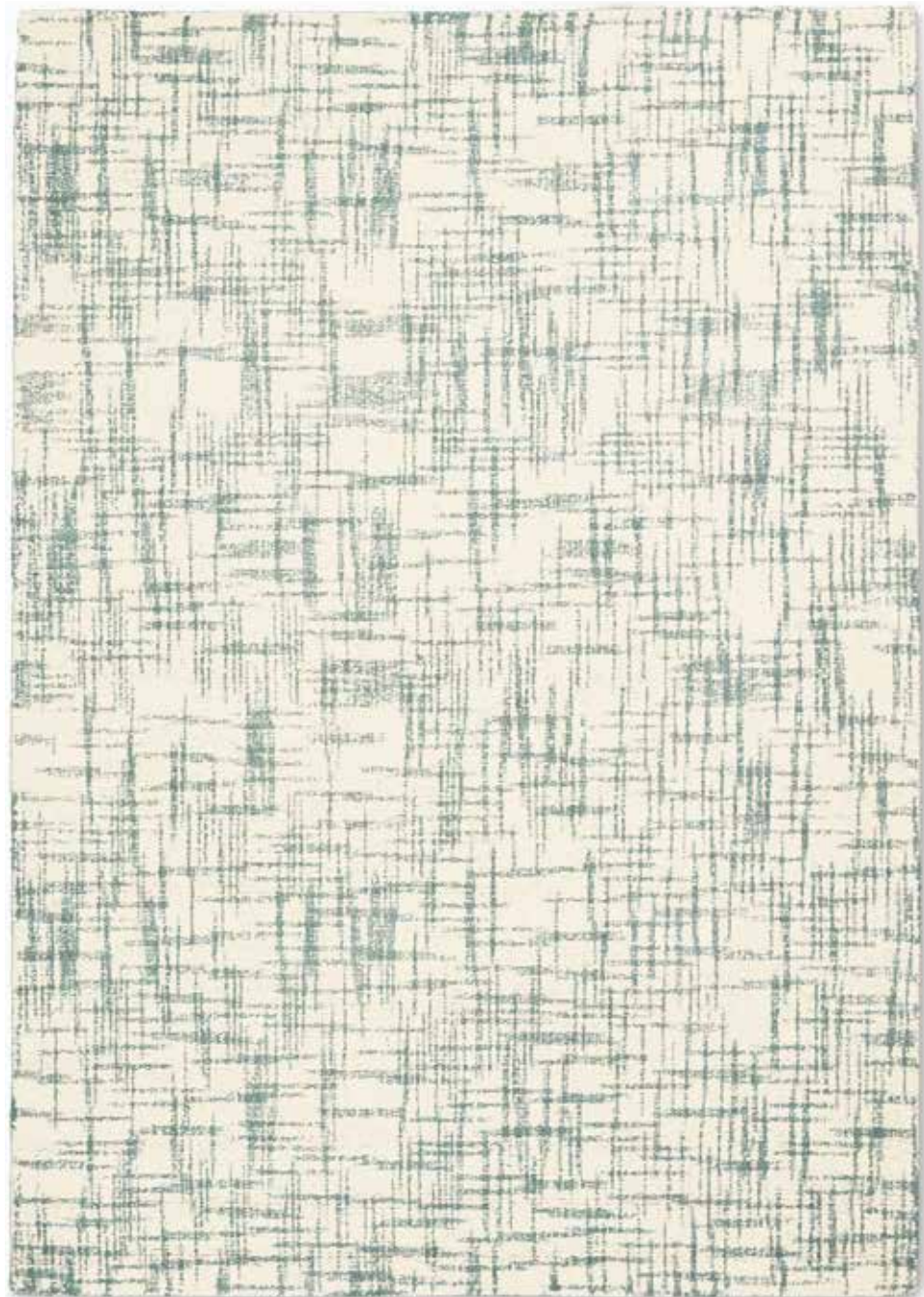
MIDTOWN GREY – CK790 GREY



MIDTOWN BLACK – CK790 BLACK

TUCSON - CK820

THE TUCSON RUG COLLECTION FROM CALVIN KLEIN EMBODIES TIMELESS AMERICAN STYLE. THESE WOOL LOOP-PILE RUGS ARE HAND TUFTED AND COMBINE CALVIN KLEIN'S STRIKING DESIGN WITH CASUAL COMFORT AND A MODERN SENSIBILITY.



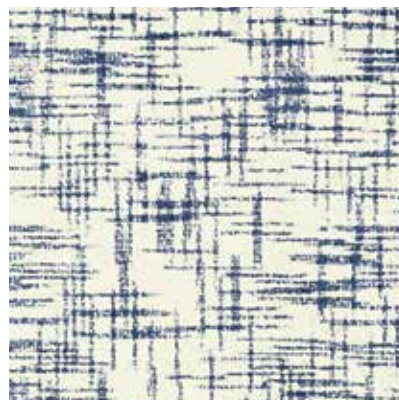
MIDVALE PARK IVORY SAGE – CK820 IVSAG



MIDVALE PARK IVORY LIGHT GREY – CK820 IVLGY



MIDVALE PARK IVORY GREY – CK820 IVGRY



MIDVALE PARK IVORY NAVY – CK820 IVNAV

WOOL LOOP PILE

- 2 FT 3 IN. X 7 FT 6 IN. (0.69M X 2.29M)
- 4 FT X 6 FT (1.22M X 1.83M)
- 5 FT 3 IN. X 7 FT 5 IN. (1.60M X 2.26M)
- 7 FT 9 IN. X 9 FT 9 IN. (2.36M X 2.97M)
- 8 FT 6 IN. X 11 FT 6 IN. (2.59M X 3.51M)

LAS VEGAS - CK830

THE LAS VEGAS RUG COLLECTION FROM CALVIN KLEIN EMBODIES SOPHISTICATED MINIMALISM. THE TEXTURED CUT-AND-LOOP WOOL PILE CREATES A DYNAMIC PATTERN, FOR A VERSATILE ADDITION TO ANY SPACE.



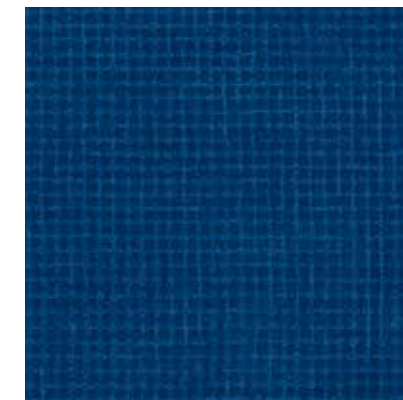
SPRING VALLEY RED – CK830 RED



SPRING VALLEY IVORY – CK830 IVORY



SPRING VALLEY GREY – CK830 GREY



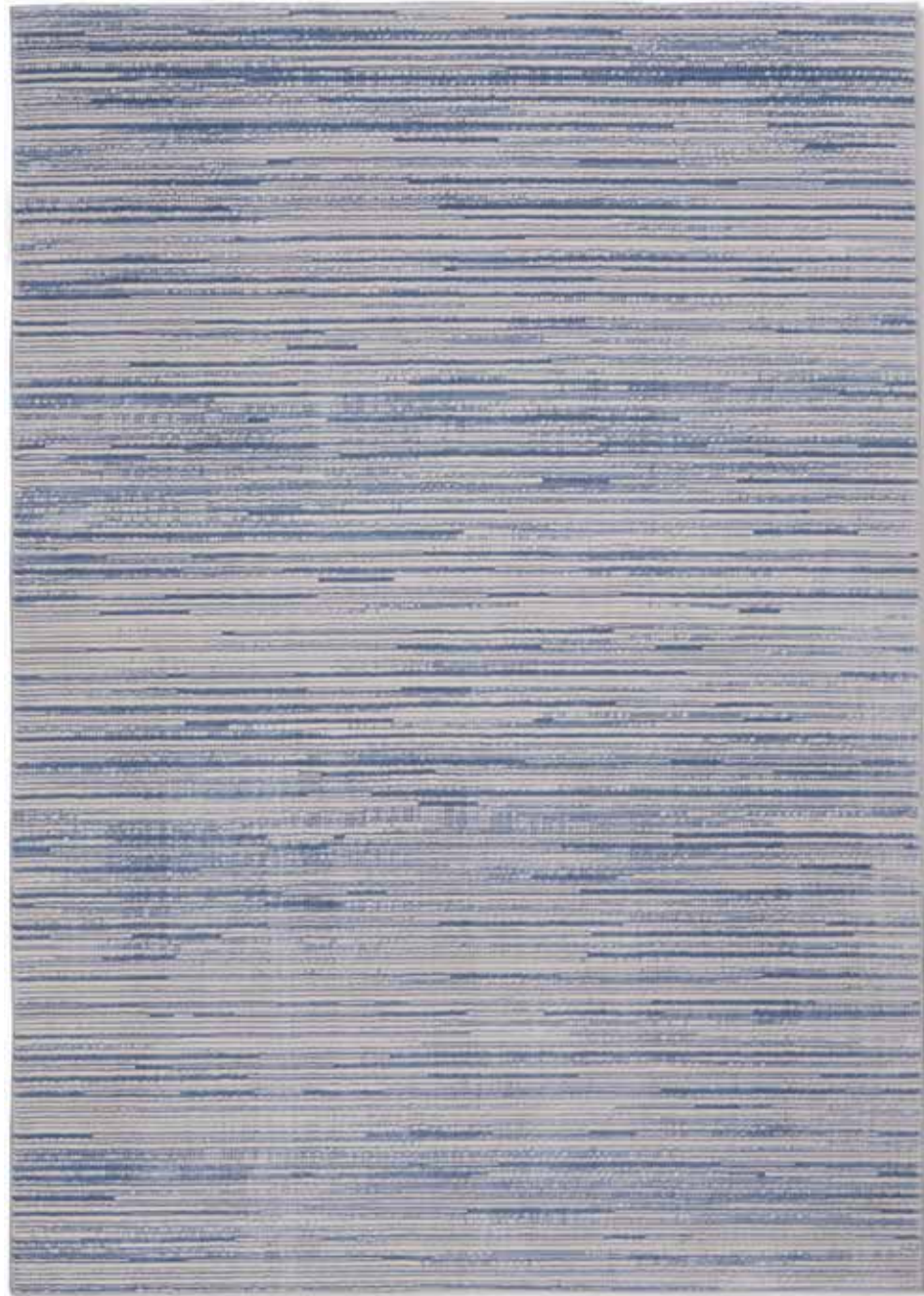
SPRING VALLEY NAVY – CK830 NAVY

WOOL CUT & LOOP PILE

- 2 FT 3 IN. X 7 FT 6 IN. (0.69M X 2.29M)
- 4 FT X 6 FT (1.22M X 1.83M)
- 5 FT 3 IN. X 7 FT 5 IN. (1.60M X 2.26M)
- 7 FT 9 IN. X 9 FT 9 IN. (2.36M X 2.97M)
- 8 FT 6 IN. X 11 FT 6 IN. (2.59M X 3.51M)

ORLANDO - CK850

THE ORLANDO RUG COLLECTION FROM CALVIN KLEIN IS A BOLD MIX OF RICH TEXTURE AND COMPLEX HUES. EACH LOOM-WOVEN RUG FEATURES A CONTEMPORARY HIGH-LOW PILE WITH REMARKABLE SHEEN AND SOFTNESS, IN DEFINED AMERICANA-INSPIRED PATTERNS.



VENTURA BLUE – CK851 BLUE



VENTURA CREAM – CK851 CREAM



VENTURA SILVER GREY – CK851 SILGY



VENTURA TAUPE – CK851 TAUPE



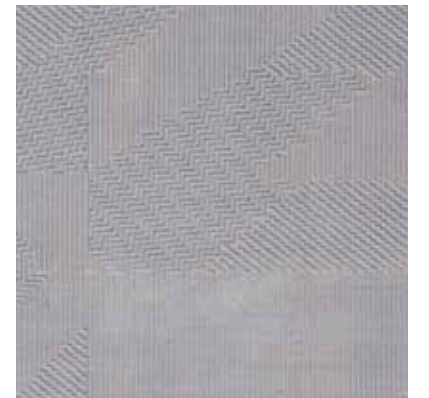
METRO WEST GREY BLUE – CK852 GRYBL



METRO WEST GREY BEIGE – CK852 GRYBG



METRO WEST GREY SAFFRON – CK852 GRYSF



METRO WEST GREY LIGHT BLUE – CK852 GYLTB

VISCOSE SHRINK

2 FT 2 IN. X 7 FT 6 IN. (0.66M X 2.29M)

3 FT 11 IN. X 5 FT 11 IN. (1.19M X 1.80M)

5 FT 3 IN. X 7 FT 3 IN. (1.60M X 2.21M)

7 FT 10 IN. X 10 FT 6 IN. (2.39M X 3.20M)

9 FT 3 IN. X 12 FT 9 IN. (2.82M X 3.89M)

NEWARK - CK860

THE NEWARK RUG COLLECTION FROM CALVIN KLEIN BLENDS COMPLEX TEXTURE WITH TIMELESS COLORWAYS FOR A BOLD REIMAGINING OF THE CLASSIC AREA RUG. AN INTRICATE CUT-AND-LOOP PILE FROM SILKY-SMOOTH FIBERS CREATES SOPHISTICATED TEXTURE FOR ANY HOME SETTING.



WEST SIDE BLUE – CK860 BLUE



WEST SIDE IVORY – CK860 IVORY



WEST SIDE SILVER – CK860 SILVR



WEST SIDE GREY – CK860 GREY

SILK POLY BLEND

2 FT 3 IN. X 7 FT 6 IN. (0.69M X 2.29M)

4 FT X 6 FT (1.22M X 1.83M)

5 FT 3 IN. X 7 FT 5 IN. (1.60M X 2.26M)

7 FT 9 IN. X 9 FT 9 IN. (2.36M X 2.97M)

8 FT 6 IN. X 11 FT 6 IN. (2.59M X 3.51M)

NOURISON USA WORLD HEADQUARTERS • 5 SAMPSON STREET • SADDLE BROOK, NJ 07663
(201) 368-6900 • FAX (201) 368-0739 • 1-800-223-1110 • E MAIL: CKRUGS@NOURISON.COM • WWW.NOURISON.COM

ATLANTA MERCHANDISE MART • 240 PEACHTREE ST. N.W., SPACE 1L1, 2 • ATLANTA, GA 30303 • (404) 584-7255 • FAX (404) 584-0611

WORLD MARKET CENTER • 455 S. GRAND CENTRAL PARKWAY, BUILDING C, SUITE C112 • LAS VEGAS, NV 89106 • (702) 454-2600 • FAX (702) 454-2026

NEW YORK • 295 5TH AVE, SUITE 114 • NEW YORK, NY 10016 • (212) 545-1030

HIGH POINT • INTERNATIONAL HOME FURNISHINGS CENTER (IHFC) • 210 E. COMMERCE AVE., INTERHALL: IH-101 • HIGH POINT, NC 27260 • (336) 841-6900

SWITZERLAND: NOURISON EUROPE • FREILAGERSTR. 39 • 8047 ZURICH • SWITZERLAND • (+41) 044 401 45 46/47 • FAX: (+41) 044 401 45 48

WWW.CALVINKLEINRUGS.COM

RUGS SHOWN ARE OF SPECIFIC SIZE. DESIGN DETAILS WILL VARY WITH SIZE CHANGES.

CALVIN KLEIN RUG COLLECTION IS MANUFACTURED EXCLUSIVELY BY

Nourison[™]
Timeless Design for the Modern Age